



November 29, 2019

NEW PRODUCT**Native PFAS Solution/Mixture****PFAC30PAR**

In order to offer our customers a more comprehensive mixture of commonly analyzed per- and polyfluoroalkyl substances (PFAS), **Wellington** has prepared a native solution/mixture which expands on the analyte list of our popular PFAC-24PAR product. The updated mixture contains 6 additional analytes including HFPO-DA, NaDONA, 9CI-PF3ONS, 11CI-PF3OUdS, FBSA, and FHxSA. In addition, the N-MeFOSAA and N-EtFOSAA components of **PFAC30PAR** are characterized mixtures of the branched and linear isomers (versus linear isomers only) to facilitate isomer specific quantification of these analytes. As in PFAC-24PAR, this solution also includes characterized mixtures of the linear and branched isomers of the C₆ and C₈ perfluoroalkanesulfonates (PFHxSK and PFOSK).

The mass-labelled solution/mixture **MPFAC-24ES** can still be used in combination with **M3HFPO-DA** to create a mixture containing suitable surrogates for the **PFAC30PAR**.

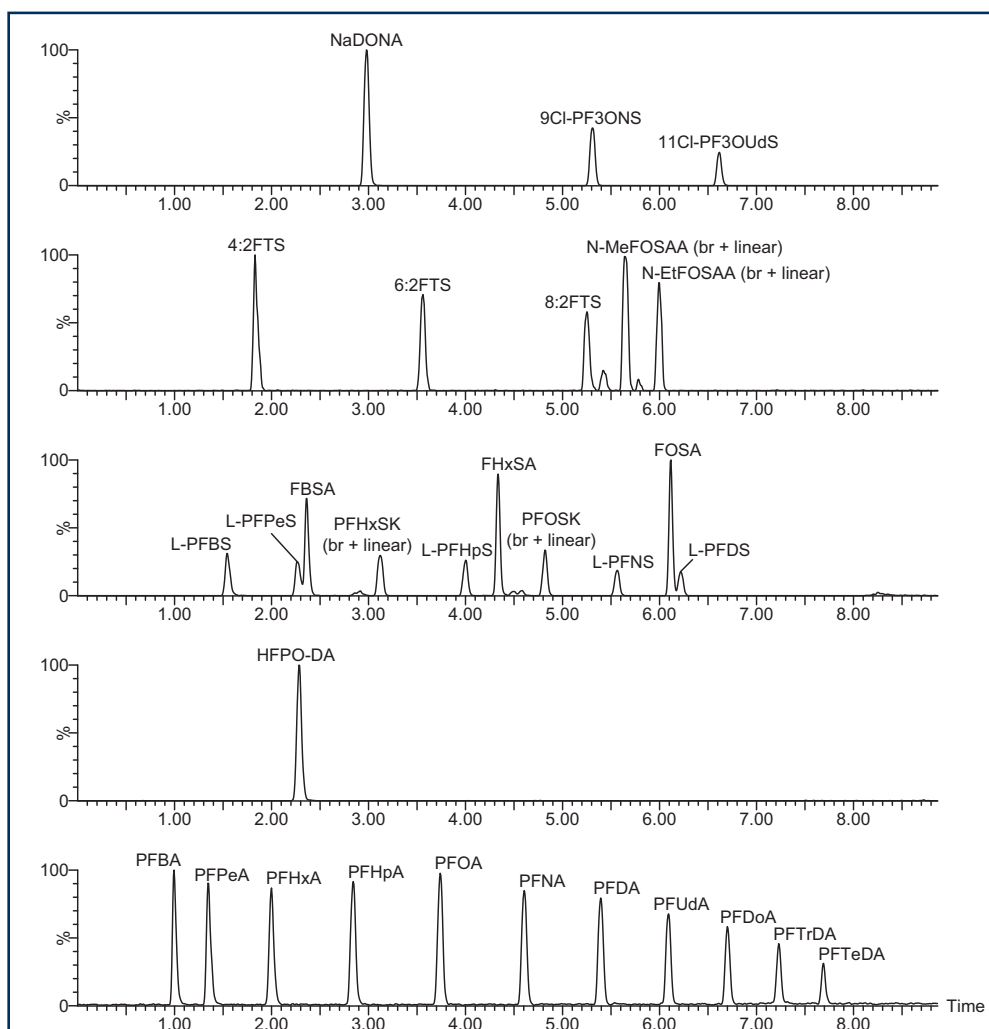
Cat. No.	Product (methanol)	Qty	Conc
PFAC30PAR	Native PFAS Precision and Recovery Standard Solution (30 components)	1.2 ml	1.0 µg/ml ea
	Perfluoroalkylcarboxylic acids (C4-C14)		
	Perfluoroalkanesulfonamides (C4, C6, & C8)		
	N-MeFOSAA & N-EtFOSAA (linear and branched isomers)		
	Perfluoroalkanesulfonates (C4, C5, C7, C9, C10 linear, C6 & C8 linear and branched isomers)		
	4:2FTS, 6:2FTS, & 8:2FTS		
	HFPO-DA		
	NaDONA		
	9CI-PF3ONS & 11CI-PF3OUdS		

Please contact your local distributor or info@well-labs.com for pricing and delivery.

Visit our website (www.well-labs.com) for a complete listing of our new products.



Chromatogram of PFAC30PAR (SRM Acquisition)



PFAC30PAR complements our existing line of mixed PFAS reference standards.

Cat. No.	Product (methanol)	Qty	Conc
PFC-MXA	Native PFCA Solution/Mixture (C ₄ -C ₁₄)	1.2 ml	2.0 µg/ml ea
PFS-MXA	Native PFSA Solution/Mixture (C ₄ , C ₆ -C ₈ , C ₁₀)	1.2 ml	2.0 µg/ml ea
PFAC-MXA	Native PFCA/PFSA Solution/Mixture (10)	1.2 ml	5.0 µg/ml ea
PFAC-MXB	Native PFCA/PFSA Solution/Mixture (17)	1.2 ml	2.0 µg/ml ea
PFAC-MXC	Native PFCA/PFSA Solution/Mixture (21)	1.2 ml	2.0 µg/ml ea
EPA-537PDS-R1	U.S. EPA Method 537 Native PDS (18)	1.2 ml	2.0 µg/ml ea
EPA-537PDSL-R1	U.S. EPA Method 537 Native Linear PDS (18)	1.2 ml	2.0 µg/ml ea
PFAC-24PAR	Native PFAS Solution/Mixture (24)	1.2 ml	2.0 µg/ml ea
MPFAC-MXA	Mass-Labelled PFCA/PFSA Solution/Mixture (9)	1.2 ml	2.0 µg/ml ea
MPFAC-C-ES	Mass-Labelled PFCA/PFSA Extraction Standard (13)	1.2 ml	2.0 µg/ml ea
MPFAC-C-IS	Mass-Labelled PFCA/PFSA Injection Standard (4)	1.2 ml	2.0 µg/ml ea
EPA-537IS	U.S. EPA Method 537 Internal Standard PDS (3)	1.2 ml	variable
EPA-537SS-R1	U.S. EPA Method 537 Surrogate PDS (4)	1.2 ml	variable
MPFAC-24ES	Mass-Labelled PFAS Extraction Standard (19)	1.2 ml	1.0 µg/ml ea

